

FLOORPLAN OPTIONS

We personalise our floorplans. Talk to us about our huge range of ready-to-go design options.

Facades available:

Barrine, Mackay, Corella	
Overall home width	12.47m
Overall home length	17.75m

Residence	288.8m ²	31.1sq
Garage	39.4m ²	4.2sq
Porch	4.6m ²	0.5sq
Total	332.8m²	35.8sq

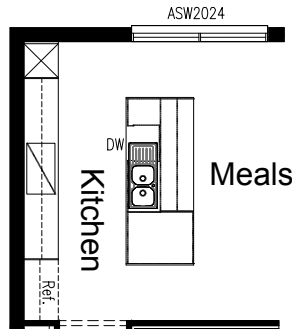
Listed details based on Barrine facade floorplan (illustrated)

*Copyright conditions. All photos and illustrations are representative only. Floor plans and specifications may be varied by Burbank without notice, the dimensions are diagrammatic only and a Building Contract with final drawings will display correct dimensions and detail. All designs are the property of Burbank and must not be used, reproduced, copied or varied, wholly or in part without written permission from an authorised Burbank representative. Copyright Burbank Australia (NSW) Pty Ltd. ABN 88 610 822 770. NSW BL 295627C ACT BL 2016566.

Call 13 BURBANK
Visit burbank.com.au

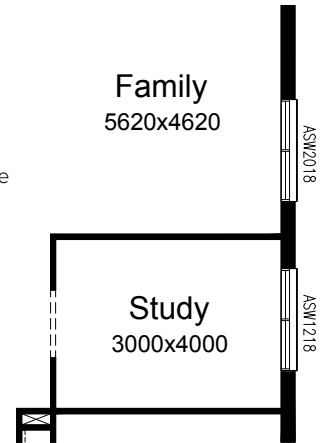
OPTION K1

Provide Kitchen option with 1200mm wide island bench, 2No. 900mm base cupboards, 1no. DW provision, 1no. 450mm drawer unit and 900mm base cupboard facing the Meals. Provide open shelf above refrigerator space, 2no. 350mm base cupboards, 2no. 800mm base cupboards, 2no. 350mm overhead cupboards, 2no. 800mm overhead cupboards, 1no 900mm underbench oven with cooktop & retractable rangehood within 1no. 900mm overhead cupboard fixed shut. Provide 1no. tower carcass with open shelf. Adjust tiling and benchtop to suit.



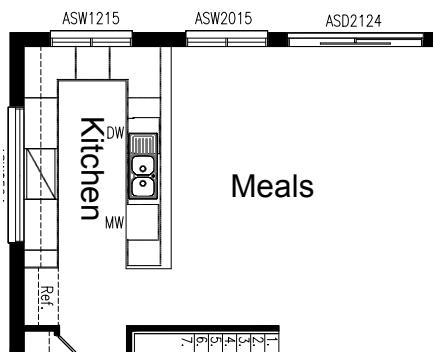
OPTION IP1

Provide Study room with bulkhead to entry and additional ASW1218 sliding window to existing Family Room. reduces Family room in length to 5620mm and relocate ASW2018 sliding window to Family as shown.



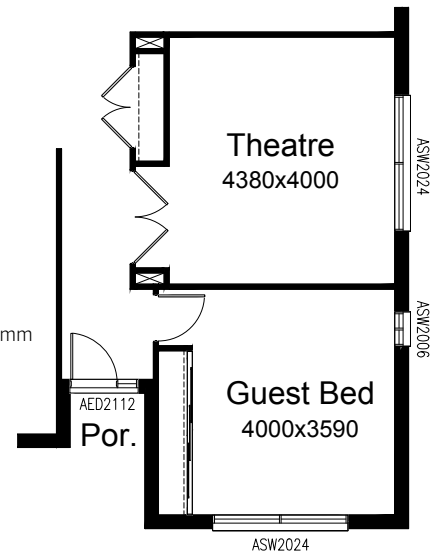
OPTION K2

Provide U-shaped Kitchen upgrade including 450mm drawer unit, dishwasher provision, microwave provision with pot drawer, 3No. 900mm base cupboards, 2No. 900x900mm base corner cupboards, 600mm base cupboard, 350mm base cupboard, 300mm base cupboard, 1No. 800mm overhead cupboard, 2No. 900mm overhead cupboards, 1No. 300mm overhead cupboard, 1no. 900mm underbench oven with cook top & retractable rangehood concealed within 900mm overhead cupboard, 1no. Open shelf above refrigerator space, additional bench top and tiled splashback to suit. Additional AFW0524 fixed window and ASW1215 sliding window. Replace ASW2024 sliding window with ASW2015 sliding window and relocate as shown.



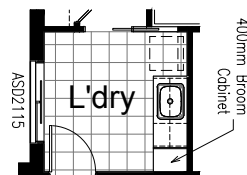
OPTION IP2

Provide 2No. 820mm hinged doors to Theatre room.



OPTION LD1

Provide Laundry Option with additional inset laminated trough, 800mm base cupboard, 400mm base cupboard, 800mm overhead cupboard, 400mm overhead cupboard, 400mm Broom closet with shelf, additional tiled splashback and bench top to suit.



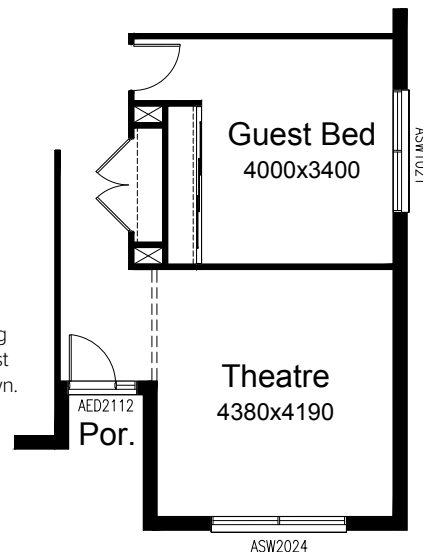
OPTION EP1

Provide Alfresco including tiled roof, structural concrete slab and 2No. 350x350mm brick piers. Adds 3600mm of length to the building footprint. Provide bi - part sliding door ASDBP2136 in lieu of window



OPTION IP3

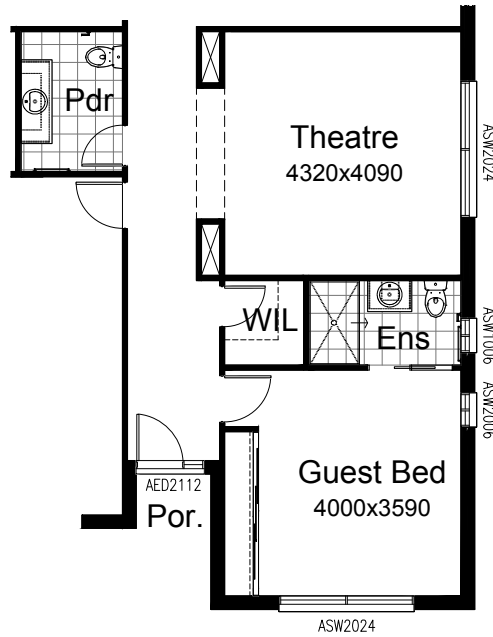
Provide floor plan option that swaps location of existing Theatre and Guest bedroom as shown.



*Copyright conditions. All photos and illustrations are representative only. Floor plans and specifications may be varied by Burbank without notice, the dimensions are diagrammatic only and a Building Contract with final drawings will display correct dimensions and detail. All designs are the property of Burbank and must not be used, reproduced, copied or varied, wholly or in part without written permission from an authorised Burbank representative. Copyright Burbank Australia (NSW) Pty Ltd. ABN 88 610 822 770. NSW BL 295627C ACT BL 2016566.

OPTION IP4

Provide Ensuite to Guest bedroom including 720mm cavity sliding door, 1500x900mm tiled shower, 782mm vanity and WC with ASW1006 sliding window. Also adds Walk-in Linen with 720mm hinged door and 4No 450mm shelves. Option pushes existing Theatre down by 1530mm and reduces in depth to 4320mm in line with Powder room. Family room reduces to 7180mm long. Also remove 900x900mm shower from Powder room and replace 782mm vanity with 1482mm vanity with single basin.



OPTION IP5

Provide floor plan option replacing first floor Study with Walk-in Linen with stud and plaster walls, 4No. 450mm shelves, 820mm hinged door and remove standard Linen cupboard and add space to existing Walk-in Robe to Bed 1.

